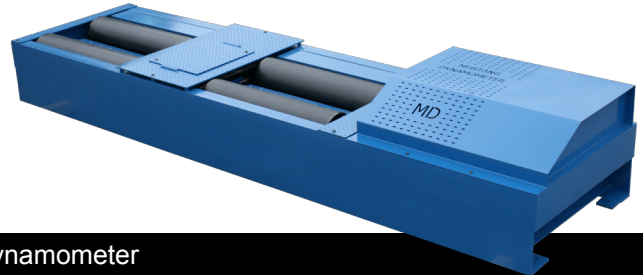




2300 Pinnacle Parkway, Twinsburg, Ohio 44087  
 Ph: 330-963-5400 • Toll Free: 888-468-7826  
 Email: sales@mustangdyne.com



## MD-250

10.7" Rolls, 175-mph, 1,500-hp, 2WD Low-Profile Performance Dynamometer



**THE MD-250. The perfect combination of exceptional value and performance.**

First introduced to the market in 1988, The MD-250 Series is Mustang Dynamometer's original performance chassis dynamometer. This dyno is a perfect combination of high performance capabilities and value, and for this reason, it has been a popular choice for many, many years.

For the fully equipped shop, no dyno offers more value or better in-house motor vehicle testing capabilities than the Mustang MD-250. For starters, the MD-250 can boast a 1,500 horsepower measurement capacity at a top speed of 175 mph and a powerful air-cooled eddy current brake provides the MD-250 with 900-hp worth of loading capacity. Do not be fooled by its compact size - the MD-250 is a serious dynamometer with serious tuning capabilities.

The MD-250 uses its powerful eddy current power absorber, a frictionless, air-cooled braking device, to enable it to apply variable and steady state loading. A complete control and data acquisition system lets you design a wide range of tests or select from a host of pre-configured tests included with the standard system.

The 250's traditional four roller design makes setting up vehicles a snap – simply drive onto the 250 and let your tires settle in between the rollers. The 250 can be installed above-ground or below-ground, it's your choice. The above-ground system utilizes an optional premium platform and ramp system with an above-ground restraint kit. The addition of an axle pull down kit help keep the tires from slipping or trying to "climb out" of the rollers.

### Specifications

<b>Horsepower:</b>	1,500 hp peak measurement capacity 900 hp peak absorption
<b>Loading Device:</b>	Air-cooled eddy current power absorber (model MDK-250)
<b>Inertia:</b>	Approximately 2,000 lbs. base mechanical inertia
<b>Max Speed:</b>	175 mph
<b>Controls:</b>	Closed Loop Digital Controller with WindowsXP based PowerDyne Software. Includes Patented Virtual Road Simulation Technology.
<b>Rolls/Wheelbase:</b>	Precision machined & dynamically balanced Knurled finish for superior tire traction Belted for bi-directional capability 10.7" (272mm) diameter balanced rolls 40" (1,016mm) face length 28" (711mm) inner track width 108" (2,743mm) outer track width 19.6" (498mm) roll spacing
<b>Roll Lock:</b>	Industrial brake pad in contact with O.D. of roll
<b>Roll Decelerator:</b>	Allows vehicle deceleration without use of vehicle brakes. Eddy Current PAU used to decelerate rollers.
<b>Air Requirements:</b>	100 PSI, dry, regulated, oil free
<b>Power Requirements:</b>	115 VAC, single phase, 60 Hz, 15 Amps (computer) 230 VAC, single phase, 60 Hz, 40 Amps (dynamometer)
<b>Axle Weight:</b>	12,000 lbs (2,727 kg) maximum
<b>Shipping Weight:</b>	4,500 lbs. (dynamometer weight only)

### Options & Hardware

- SmartTach Engine RPM
- Temperature Sensors
- Pressure Sensors
- Weather Station
- Air to Fuel Ratio Modules
- 5 Gas Analyzer
- Optical RPM Pick-up
- DE Upgrade
- Above Ground Kit
- Opacity Meter
- Above Ground Ramps
- Vehicle Pull Down Kit
- Integrated Xmas Tree
- Motorcycle Kit
- OBD Interface
- On-Site Training
- Touchscreen Interface
- Vehicle Cooling Fan
- TS1 Coil Pickup