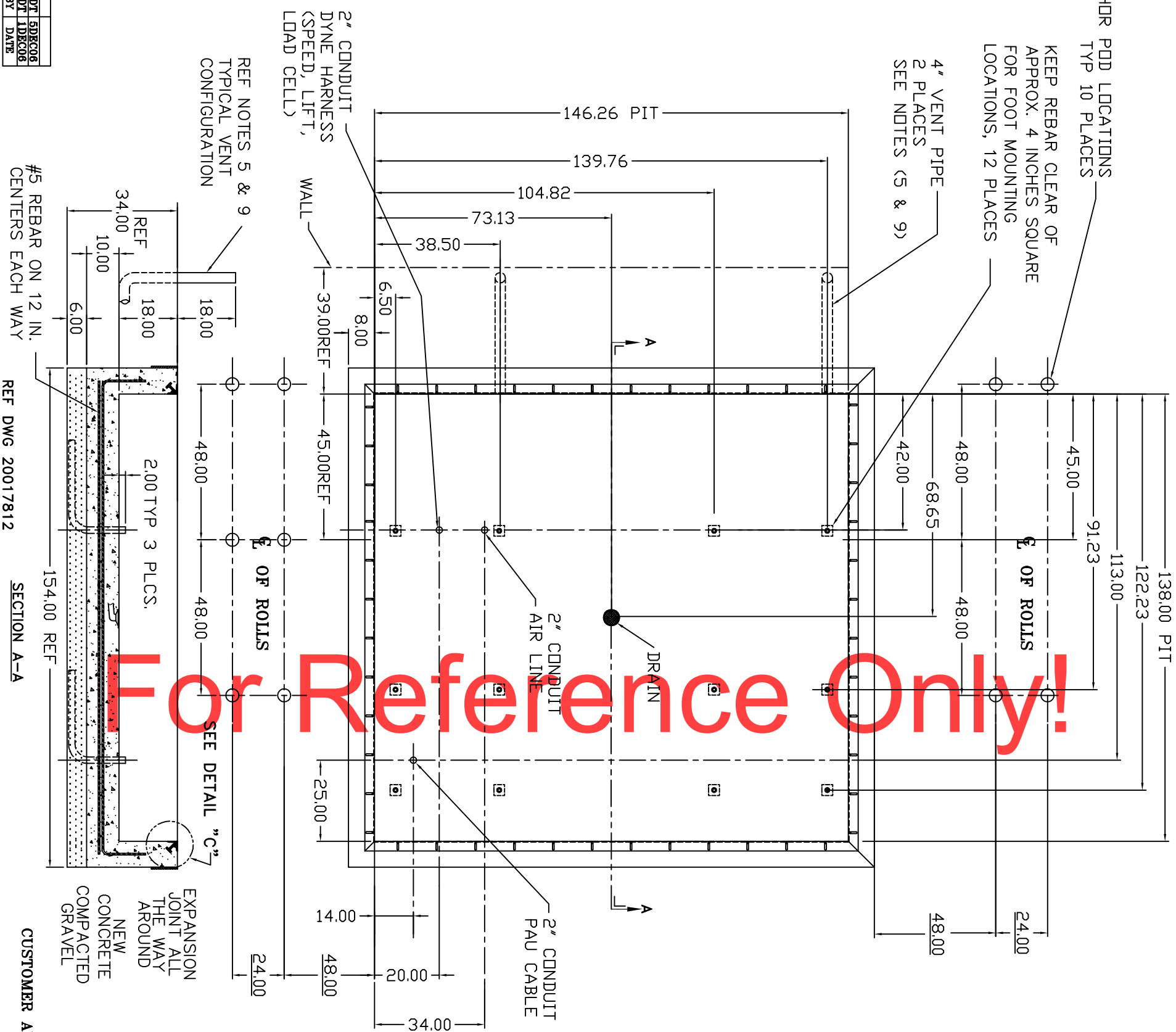


ANCHOR PDD LOCATIONS  
TYP 10 PLACES

KEEP REBAR CLEAR OF  
APPROX. 4 INCHES SQUARE  
FOR FOOT MOUNTING  
LOCATIONS, 12 PLACES

4" VENT PIPE  
2 PLACES  
SEE NOTES (5 & 9)



#5 REBAR ON 12 IN.  
CENTERS EACH WAY

REF DWG 20017812

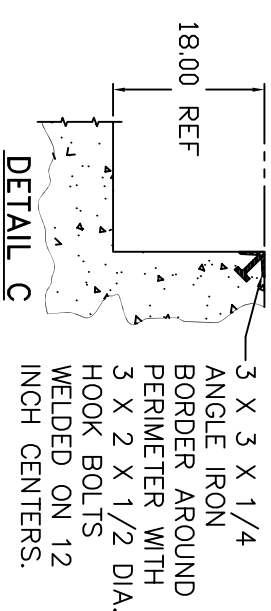
SECTION A-A

CUSTOMER APPROVAL:  
DATE:

For Reference Only!

**NOTES:**

- 1) AN INTEGRAL POUR OF THIS PIT IS RECOMMENDED. IF THIS IS NOT POSSIBLE THEN COMPLETE FLOOR (PIT BOTTOM) MUST BE POURED WITH THE WALLS PINNED ON TOP.
- 2) THE INSTALLER OF THIS DYNO PIT ACCEPTS FULL RESPONSIBILITY FOR ADHERING TO ALL LOCAL, STATE AND FEDERAL CONSTRUCTION CODES. IF ANY OF THE INFORMATION OR IDEAS DEPICTED IN THIS DRAWING DO NOT ADHERE TO THESE CODES, MUSTANG DYNAMOMETER MUST BE NOTIFIED IN WRITING OF CODE VIOLATIONS.
- 3) COMPRESSIVE STRENGTH OF CONCRETE IS NOT TO BE LESS THAN 3000 PSI.
- 4) ALL DIMENSIONS ARE IN INCHES.
- 5) PIT VENT REQUIREMENT:  
MUST BE ACCORDING TO NATIONAL ELECTRIC CODE. PIT MUST BE VENTED TO SOME POINT OUTSIDE THE PIT AND AT A POINT HIGHER THAN 18" ABOVE THE GRADE LEVEL (SHOP FLOOR). FAN (NOT SUPPLIED) SHOULD CONSTANTLY PULL AIR OUT OF THE PIT AT A RATE OF SIX AIR CHANGES PER HOUR FROM THE BOTTOM OF THE PIT FLOOR.
- 6) WALL THICKNESS IS FOR REFERENCE ONLY. THE WALLS SHOULD BE INSTALLED ACCORDING TO LOCAL CODES.
- 7) ALL DIMENSIONS ARE IN INCHES. TOLERANCES FOR ALL DIMENSIONS TO BE +.06/- .06.
- 8) THE VENT FAN IS NOT SUPPLIED BY MUSTANG DYNAMOMETER.
- 9) LOCATION OF FOUR INCH VENT PIPE IS FOR REFERENCE ONLY. ACTUAL LOCATION TO BE PROVIDED BY CUSTOMER.
- 10) ALL CONDUIT RUNS SHOULD TERMINATE AT THE CONTROL BOX AND EXTEND AT LEAST 18" ABOVE THE GRADE LEVEL (SHOP FLOOR).



B	PROH RELOCATED CONDUITS	MDT	5DEC06
A	PROH RELEASE	MDT	1DEC06
REV	RCN	REVISION	BY DATE

<b>MD</b> MUSTANG DYNAMOMETER 2300 PINNACLE PKWY., TWINSBURG, OH 44087		TITLE: PTT INSTALLATION	
DO NOT SCALE DRAWING	UNLESS OTHERWISE SPECIFIED	DATE: MDT 1DEC06	SCALE: 1/18 IN.
TOL: .005 ± .006	SIZE: D	DWG. NO: 20037509	REV: B