

MD-750

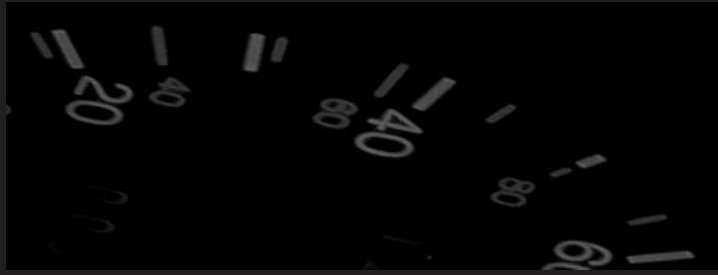
Dynamometer

MD[®]
MUSTANG
DYNAMOMETER



No speed limits

A larger version of the MD-250, the MD-750 is capable of absorbing 800 hp at speeds up to 120 mph, making it the most robust four-roll, air-cooled, eddy current dynamometer in the industry.



While features like the dual eddy current design allow you to test powerful vehicles for longer periods of time, an increased roll diameter enhances traction under load.

The MD-750 features a heavy-duty structural steel frame, precision balanced rollers, and a heavy duty restraint kit. Our computer based control system features full database, data acquisition, graphing, and printing capabilities. Optional accessories include an A/F meter and an integrated engine tachometer interface. A separate hand controller provides complete control from the driver's seat during testing.

Possible applications include diesel truck testing, medium duty and light duty gasoline truck testing, research & development, durability testing, engine cooling systems analysis, commercial fleet management, and advanced high performance tuning.



The 750 is Mustang's premier diesel truck dynamometer - it's perfect for large diesel truck dyno days and for diesel truck shoot-outs

MD-750

Horsepower:

Loading:

Controls:

Hand Control:

Rolls:

Maximum Speed:

Frame:

Lift:

Air Requirements:

Power Requirements:

Inertia:

Axle Weight:

Shipping Weight:

Options:

CHASSIS DYNAMOMETER

*1,000-hp maximum measurement capability
800-hp peak absorption*

Twin air-cooled eddy current power absorbers

DAC based Controller with Microsoft Windows™ based Software. Ethernet based communications between personal computer (optional) and controller. Includes Patented virtual Road Simulation Technology (RST)

Wireless in-car controls available

*Precision machined & dynamically balanced, knurled rolls
Belted for bi-directional capability
19.75" (502 mm) diameter balanced rolls
41" (1,041 mm) face length
26" (660 mm) inner track width
108" (2,743 mm) outer track width*

120 mph (193 kph)

*Heavy-duty structural steel frame
Heavy-duty restraint kit included*

Between roll lift with integrated roll lock

80-120 PSI, dry, regulated, oil free

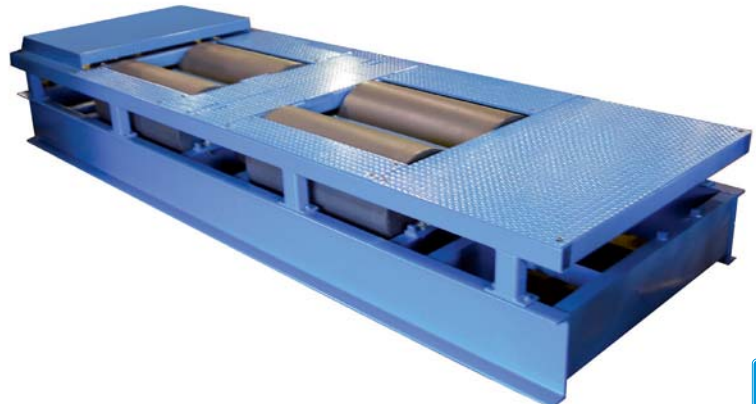
*115 VAC single phase, 60 Hz, 15 Amps (computer)
230 VAC three phase, 60 Hz, 40 Amps (dyno controls)*

Approx. 2,150 lbs

12,000 lbs. (5,455 kg) maximum (24,000 lbs. optional)

9,400 lbs (4,264 kg)

- Vehicle Cooling Fan
- SmartTach Engine RPM
- Pressure Sensors
- Air to Fuel Ratio Modules
- Optical RPM Pick-up
- Computer System with monitor
- Above Ground Kit
- Aboveground Lift
- Wireless Touchscreen
- Temperature Sensors
- Weather Station
- 5 Gas Analyzer
- On-site Training
- OBD Interface
- Opacity Meter
- Vehicle Pull Down Kit



MD[®] MUSTANG DYNAMOMETER

2300 Pinnacle Parkway
Twinsburg, Ohio 44087
Ph: (330) 963-5400
Fax: (330) 425-3310
www.mustangdyne.com

E-mail: sales@mustangdyne.com

- Specifications subject to change without notice
- Maximum power rating based on proper tire to roll contact and correctly restrained vehicle

