



PRODUCT LIST

DATE
5/28/2021

Mustang Dynamometer
 2300 Pinnacle Parkway
 Twinsburg, OH 44087
 Phone: (330) 963-5400
 Fax: (330) 425-3310
 Email: Sales@MustangDyne.com
MustangDyne.com

PROJECT NAME	DYNO-8"DIA
---------------------	------------

ITEM#	QTY	MODEL	DESCRIPTION	WGT
1	1	EXH-808	INLET HOSE ASSEMBLY Extreme Exhaust Hose - 8"dia x 8'	
2	2	BC80	Bridged Hose Clamp - 8"dia	
3	1	FS80	S.S. Female Quick Disconnect - 8"dia	
4	1	TS80	Tailpipe Adapter w/ clip, S.S., 8"dia	
5	1	MS80	Male Quick Connector - 8"dia., S.S.	
6	1	ASSM	Factory Assembly Charge	
7a	1	YS8060	DUAL EXHAUST ASSEMBLY Wye Adapter - 8"dia main, 6"dia branches, S.S.	
7b	1	MS80	Male Quick Connector - 8"dia., S.S.	
8	2	EXH-606	Extreme Exhaust Hose - 6"dia x 6'	
9	4	BC60	Bridged Hose Clamp - 6"dia	
10	2	TS60	Tailpipe Adapter w/ clip, S.S., 6"dia	
11	1	ASSM	Factory Assembly Charge	
12	1	EXH-810	OUTLET HOSE ASSEMBLY Extreme Exhaust Hose - 8"dia x 10'	
13	2	BC80	Bridged Hose Clamp - 8"dia	
14	1	MG80	Male Quick Disconnect - 8"dia., Galv.	
15	1	ASSM	Factory Assembly Charge	
16	1	FAN	UVS150-7.5-3-II - Belt Drive Exhaust Fan, Class II, BI Wheel, 7.5HP, ODP, 230/3/60, 4000 CFM @ 6" wg, w/ RIS Vibration Isolators, Weather Cover & 600F Construction -Rotation/Discharge: CCW/BHD	
17a	1	REDUCER	Fan Inlet Reducer - 16.19"dia to 8"dia, Galv. Steel	
17b	1	FG80	Female Quick Disconnect - 8"dia, Galv.	
18a	1	REDUCER	Fan Outlet Reducer - 11.94" x 15.88" to 8"dia, Galv. Steel	
18b	1	FG80	Female Quick Disconnect - 8"dia, Galv.	
19	1	EFC-2XX,3-7.5-2XX,1	Enclosed Fan Starter, W/ overload protection, 7.5 HP max, NEMA 4X, 230/3/60 fan, 230/1/60 coil, START/STOP + RESET Buttons (Shipped Loose)	
20	2	FSB36	Free Standing Base (Exhaust Adapter Not Included), 36" Mast	

PREPARED BY: _____

PROJECT:

LOCATION:

ENGINEER:

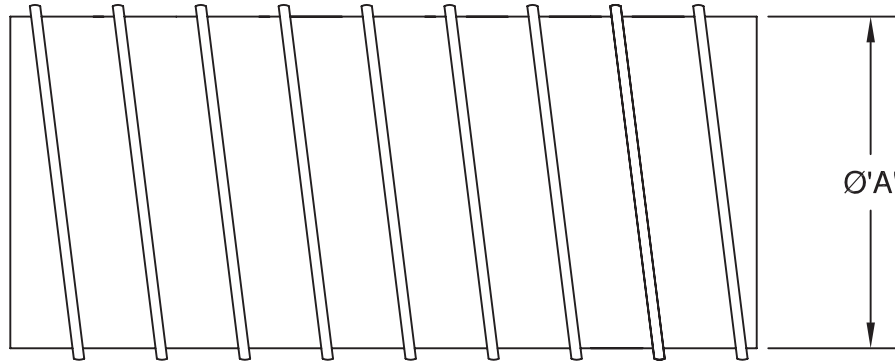
SALES ENGINEER:

ARCHITECT:

CONTRACTOR:

DATE:

EXH - FLEXIBLE HOSE W/ EXTERNAL HELIX



Ø'A'	LB/FT
3	0.65
4	0.85
5	1.17
6	1.28
8	1.70
10	2.13

SCHEDULE

ITEM	QTY	MODEL	'A'	LENGTH	REFERENCE

NOTES:

CONSTRUCTION: FIBERGLASS FABRIC COATED WITH MODIFIED SILICONE COMPOUND (INTERIOR & EXTERIOR) WITH AN EXTERNAL GALVANIZED STEEL HELIX.

TEMPERATURE RANGE: -5° F TO 850° F.*

COLOR: ORANGE WITH METALLIC HELIX.

BENEFITS: HOSE IS LIGHT WEIGHT, EXTREMELY FLEXIBLE & CAN HANDLE INTENSE EXHAUST TEMPERATURES. MECHANICALLY BONDED HELIX OFFERS STRONG, ADHESIVE FREE CONSTRUCTION RESISTANT TO EXTERNAL ABRASION SUCH AS CONTACT WITH CONCRETE FLOORING.

COMPRESSION RATIO: 6:1.

ALL DIMENSIONS IN INCHES AND NOMINAL.

*VENTAIRE TEMPERATURE RANGE STATED BASED ON INDUSTRY STANDARD BAKE TEST. WHEN ADDITIONAL AMBIENT AIR IS INTRODUCED INTO THE SYSTEM THIS TEMPERATURE RANGE CAN BE INCREASED.

PROJECT:

LOCATION:

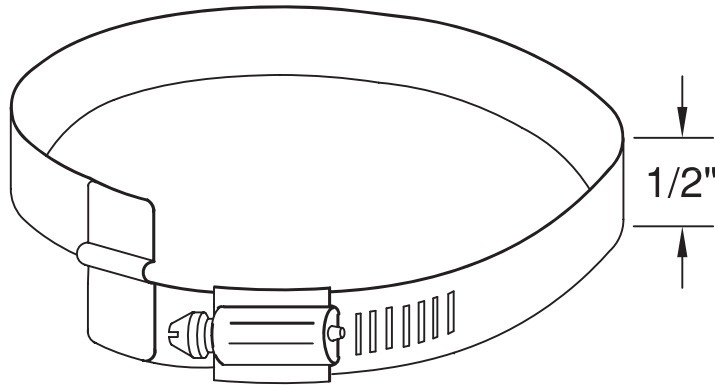
ENGINEER:

SALES ENGINEER:

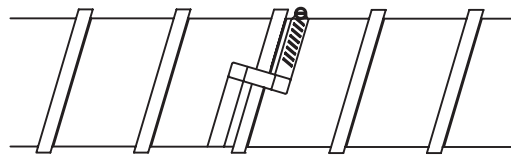
ARCHITECT:

CONTRACTOR:

DATE:



BC-BRIDGE CLAMP



USED FOR FLEX WITH EXTERNAL HELIX

MODELS	FLEX DIA.
BC30	3"
BC40	4"
BC50	5"
BC60	6"
BC70	7"
BC80	8"
BC90	9"
BC100	10"

SCHEDULE

ITEM	QTY	MODEL	DIA.	REFERENCE

NOTES
 HIGH GRADE STAINLESS STEEL CONSTRUCTION

PROJECT:

LOCATION:

ENGINEER:

SALES ENGINEER:

ARCHITECT:

CONTRACTOR:

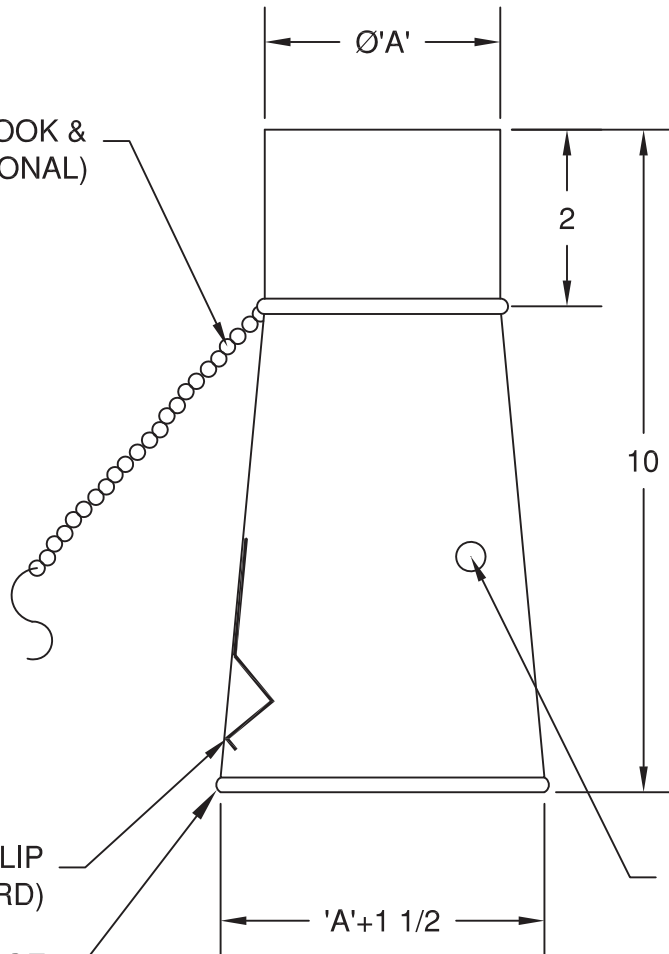
DATE:

TAILPIPE ADAPTER

TG - GALVANIZED

TS - STAINLESS

BHC - BUMPER HOOK &
 18" CHAIN (OPTIONAL)



MODEL		
GALV	S.S.	'A'
TG40	TS40	3-7/8
TG50	TS50	4-7/8
TG60	TS60	5-7/8
TG70	TS70	6-7/8
TG80	TS80	7-7/8
TG100	TS100	9-7/8
TG120	TS120	11-7/8

SPRING CLIP
 (STANDARD)

SAFETY EDGE

Ø 1/2" GAS ANALYZER SLOT

SCHEDULE

ITEM	QTY	MODEL	REFERENCE

NOTES:

ALL DIMENSIONS IN INCHES.

'A' - NOMINAL HOSE I.D.

4" THRU 5" : 22 GAUGE STEEL CONSTRUCTION.

6" THRU 12": 20 GAUGE STEEL CONSTRUCTION.

PROJECT:

LOCATION:

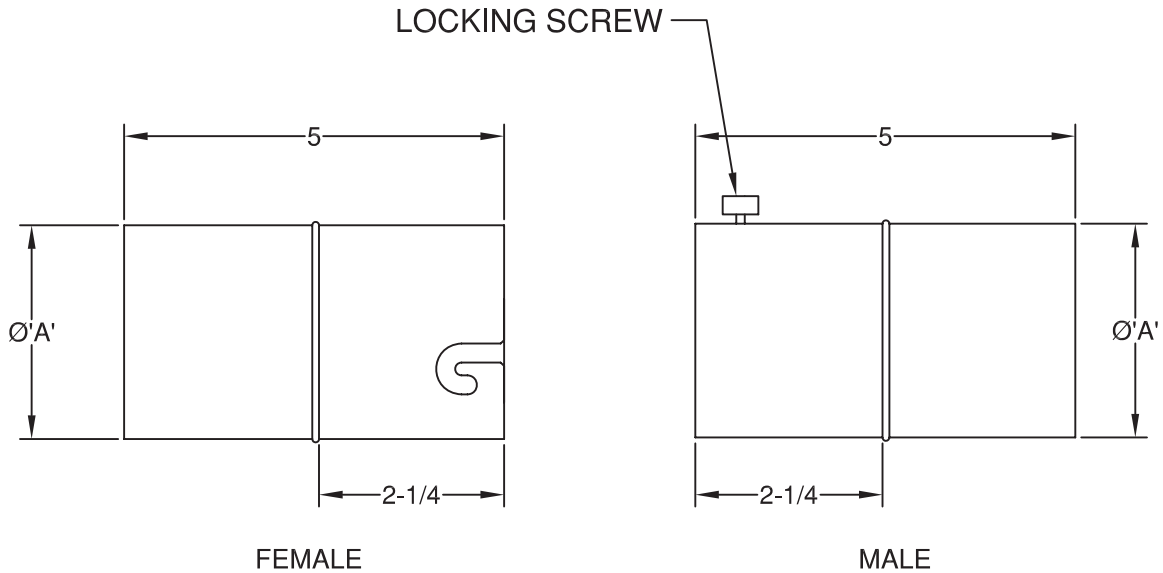
ENGINEER:

SALES ENGINEER:

ARCHITECT:

CONTRACTOR:

DATE:



MODEL DESIGNATION **MIG30III**

TYPE	SELECT
MALE	M
FEMALE	F

MATERIAL 20 GA.	SELECT
GALVANIZED STEEL	G
STAINLESS STEEL	S

NOMINAL	SELECT
'A'	
3	30
4	40
5	50
6	60
8	80

SCHEDULE

ITEM	QTY	MODEL	REFERENCE

NOTES

ALL DIMENSIONS IN INCHES AND NOMINAL

PROJECT:

LOCATION:

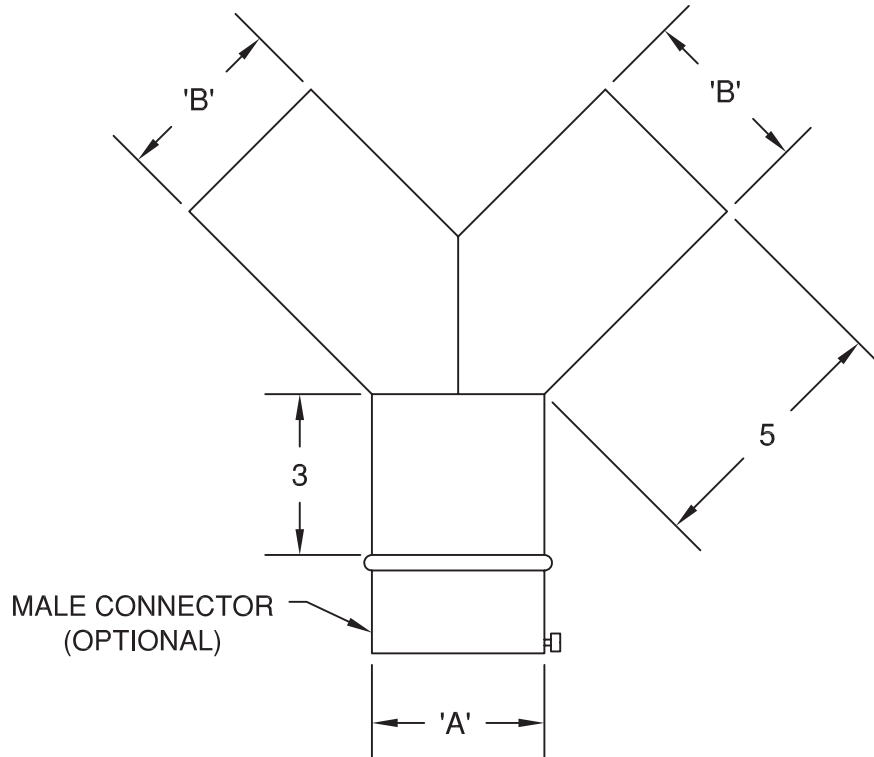
ENGINEER:

SALES ENGINEER:

ARCHITECT:

CONTRACTOR:

DATE:



MODEL			
GALV.	S.S.	'A'	'B'
YG4040	YS4040	4	4
YG6040	YS6040	6	4
YG6060	YS6060	6	6
YG8060	YS8060	8	6

SCHEDULE

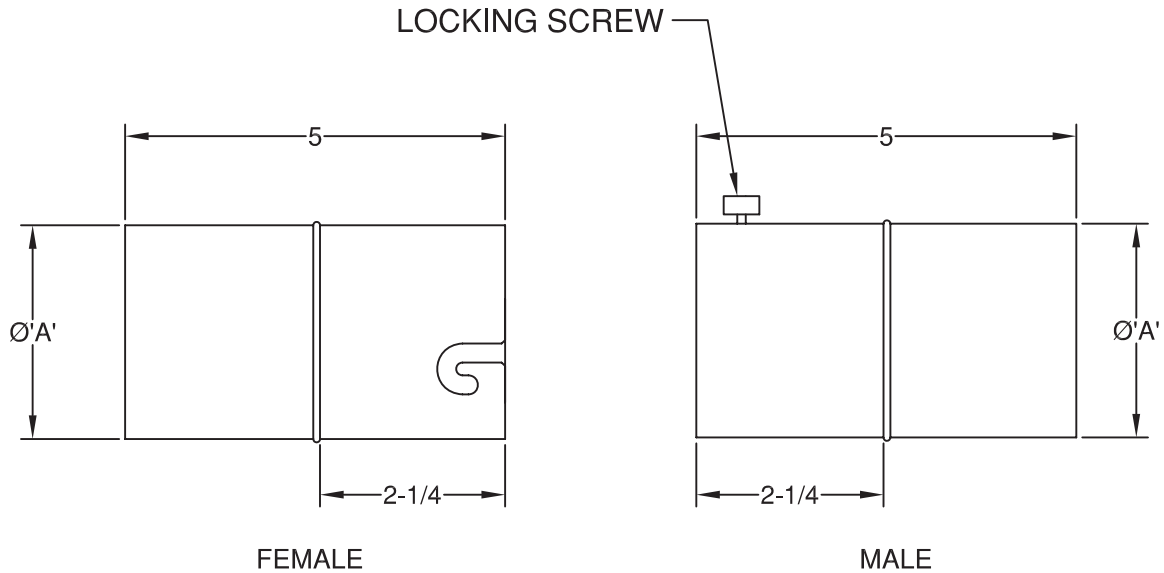
ITEM	QTY	MODEL	REFERENCE

NOTES:

ALL DIMENSIONS IN INCHES AND NOMINAL.
 'A' & 'B' NOMINAL HOSE DIAMETER.
 20 GAUGE STEEL CONSTRUCTION.
 YG - GALVANIZED.
 YS - STAINLESS.

PROJECT:

LOCATION:	ENGINEER:	SALES ENGINEER:
ARCHITECT:	CONTRACTOR:	DATE:



MODEL DESIGNATION **MIG30III**

TYPE	SELECT
MALE	M
FEMALE	F

MATERIAL 20 GA.	SELECT
GALVANIZED STEEL	G
STAINLESS STEEL	S

NOMINAL	SELECT
'A'	
3	30
4	40
5	50
6	60
8	80

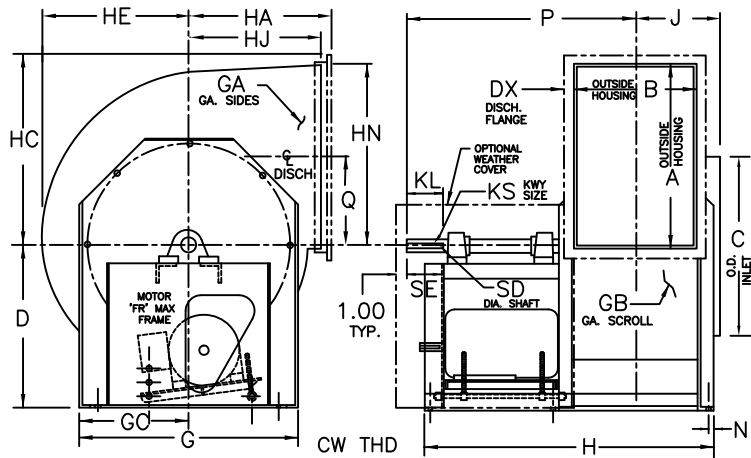
SCHEDULE

ITEM	QTY	MODEL	REFERENCE

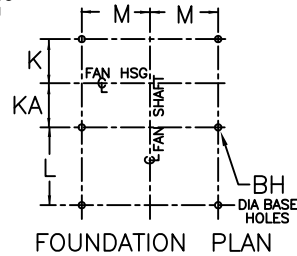
NOTES

ALL DIMENSIONS IN INCHES AND NOMINAL

PROJECT:	ENGINEER:	SALES ENGINEER:	DRAWN BY:
LOCATION:	CONTRACTOR:	DRAWN DATE:	REVISED DATE:
ARCHITECT:			

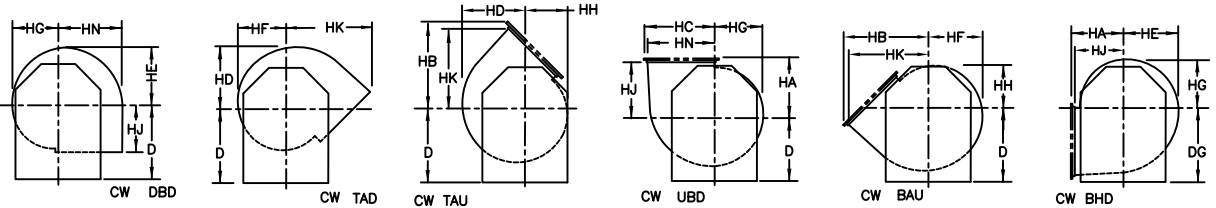


- NOTES:
 1. FLANGED OUTLET IS OPTIONAL ON SIZES 122-200
 FLANGED OUTLET IS STANDARD ON SIZES 222 THRU
 365 (EXCEPT ON TAD & DBD).
 2. 'CW' ROTATION IS SHOWN. 'CW' ROTATION IS
 SIMILAR BUT OPPOSITE.
 3. ALL UNITS ARE ROTATABLE TO ALL POSITIONS
 (EXCEPT SIZES 300-365 WITH "D" CENTER LINE
 HEIGHT ARE NOT ROTATABLE TO BHD).



FAN SIZE	A	B	BH	C	D	DG	DX	FR	G	GA	GB	GC	H	HA	HB	HC	HD	HE	FAN SIZE
122	13.00	9.75	0.44	13.25	17.63	17.63	1.00	184T	16.00	14	14	8.00	32.00	9.75	16.75	13.94	11.19	10.56	122
135	14.31	10.81	0.44	14.56	19.13	19.13	1.00	215T	17.50	14	14	8.75	34.81	10.75	18.38	15.25	12.31	11.63	135
150	15.88	11.94	0.44	16.19	19.38	19.38	1.00	215T	19.00	14	14	9.50	36.00	11.94	20.31	16.81	13.75	12.88	150
165	17.44	13.19	0.44	17.75	19.38	19.38	1.00	215T	20.50	14	14	10.25	37.31	13.13	22.25	18.38	15.06	14.13	165
182	19.38	14.56	0.44	19.50	21.88	21.88	1.25	256T	25.00	12	14	12.50	43.44	14.50	24.81	20.56	16.69	15.69	182
200	21.19	15.94	0.56	21.38	22.75	22.75	1.25	256T	25.00	12	14	12.50	44.81	15.81	27.00	22.38	18.38	17.31	200
222	23.56	17.69	0.56	23.75	25.50	25.50	1.25	256T	27.25	12	14	13.63	47.13	17.69	30.00	24.75	20.44	19.06	222
245	25.94	19.44	0.56	26.06	28.00	28.00	1.25	256T	29.75	12	14	14.88	48.81	19.50	33.00	27.13	22.38	21.00	245
270	28.63	21.38	0.56	28.50	30.50	30.50	1.50	286T	33.00	12	14	16.50	53.00	21.44	36.44	30.06	24.69	23.19	270
300	31.81	23.81	0.56	31.63	34.25	34.25	1.50	286T	36.13	10	12	18.06	56.00	23.81	40.31	33.25	27.44	25.75	300
330	35.13	26.06	0.56	34.75	37.25	37.25	1.50	326T	38.88	10	12	19.44	61.75	26.25	44.44	36.56	30.13	28.38	330
365	38.75	28.88	0.56	38.50	41.00	41.00	1.50	326T	43.75	10	12	21.88	64.56	29.00	48.88	40.13	33.50	31.50	365

FAN SIZE	HF	HG	HH	HJ	HK	HN	J	K	KA	KL	KS	L	M	N	P	Q	SD	SE	FAN SIZE
122	9.94	9.31	8.69	9.25	15.69	12.94	7.44	5.75	6.75	2.00	.25x.13	18.50	7.31	0.50	26.50	6.44	1.187	2.75	122
135	10.94	10.25	9.56	10.25	17.31	14.25	8.00	6.31	7.25	2.63	.25x.13	20.25	8.06	0.50	29.56	7.13	1.187	3.38	135
150	12.13	11.38	10.63	11.44	19.25	15.81	9.06	6.88	7.88	2.63	.25x.13	20.25	8.81	0.50	30.13	7.88	1.187	3.38	150
165	13.31	12.50	11.69	12.63	21.19	17.38	9.69	7.50	8.56	2.63	.25x.13	20.00	9.25	0.63	30.75	8.69	1.187	3.38	165
182	14.75	13.81	12.88	14.00	23.56	19.31	10.88	8.19	9.25	3.25	.38x.19	24.75	10.88	0.63	36.81	9.63	1.437	4.00	182
200	16.25	15.19	14.13	15.31	25.75	21.13	11.56	8.88	10.06	3.25	.38x.19	24.63	10.88	0.63	37.50	10.56	1.437	4.00	200
222	17.94	16.81	15.69	17.19	28.75	23.50	12.44	10.00	11.50	3.25	.38x.19	23.88	11.13	0.88	38.38	11.75	1.437	4.00	222
245	19.75	18.50	17.25	19.00	31.75	25.88	13.31	10.88	12.31	3.25	.38x.19	23.88	11.63	0.88	39.25	12.94	1.687	4.00	245
270	21.81	20.44	19.06	20.94	35.00	28.56	14.25	11.81	13.31	3.63	.38x.19	26.13	12.13	0.88	43.13	14.25	1.687	4.63	270
300	24.25	22.75	21.25	23.31	38.94	31.75	15.50	13.31	15.06	3.63	.50x.25	25.38	12.38	1.13	44.44	15.81	1.937	4.63	300
330	26.69	25.00	23.31	25.75	43.00	35.06	16.63	14.44	16.19	4.50	.50x.25	28.88	14.13	1.13	49.69	17.50	2.187	5.25	330
365	29.63	27.75	25.88	28.50	47.44	39.63	18.00	15.81	17.63	4.50	.63x.31	28.88	14.13	1.13	51.06	19.25	2.437	5.25	365



SCHEDULE

ITEM	QTY	MODEL	HP	CFM	S.P.	ELECTRICAL	DISCHARGE/ ROTATION	REFERENCE

- NOTES:
 ALL DIMENSIONS ARE IN INCHES.
 STANDARD FINISH: POLYESTER POWDER COATED



PROJECT:

LOCATION:

ENGINEER:

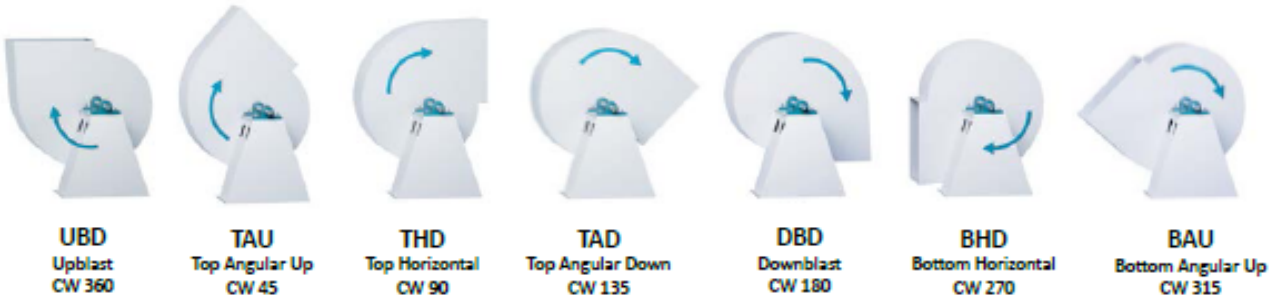
SALES ENGINEER:

ARCHITECT:

CONTRACTOR:

DATE:

CLOCKWISE (CW) - ROTATION & DISCHARGE (ROTATION VIEW FROM DRIVE SIDE)



COUNTER CLOCKWISE (CCW) - ROTATION & DISCHARGE (ROTATION VIEW FROM DRIVE SIDE)



SCHEDULE

ITEM	QTY	ROTATION/DISCHARGE	REFERENCE

NOTES:

ROTATION AND DISCHARGE DETERMIND LOOKING AT SCROLL FROM THE MOTOR SIDE.



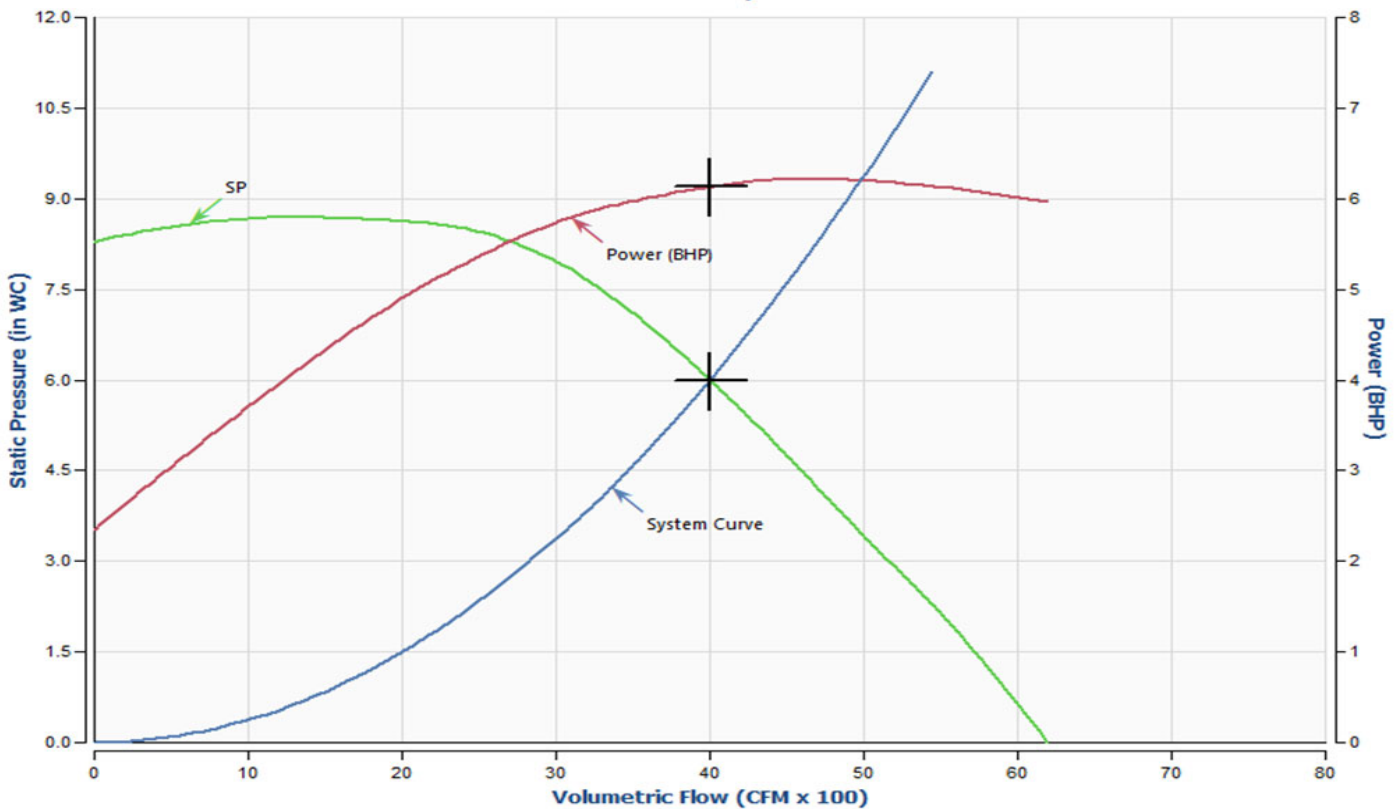
PROJECT NAME: MUSTANG DYNAMOMETER
DATE: 5/28/2021

MODEL: UVS150-7.5-3-II
REFERENCE:
AIRFLOW: 4000 CFM
SP: 6.0"WG

CLASS: II
SPEED(RPM): 3095
MAX SPEED(RPM): 3364 @ 70F
POWER(BHP): 6.13

OUTLET VELOCITY(FPM): 3101
DENSITY(lbs/ft^3): 0.075

Standard Plot with System Curve



Sound Power Ea.	Octave Bands	1	2	3	4	5	6	7	8	LwA	dBA
	Inlet dB	100	94	93	98	97	90	88	87		

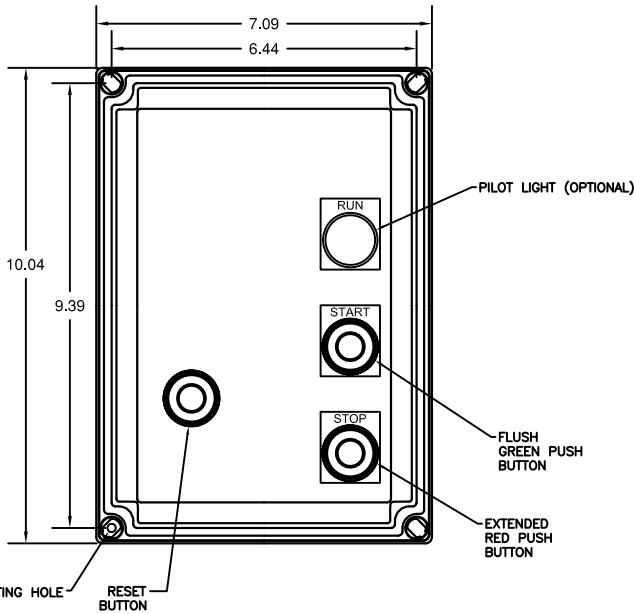
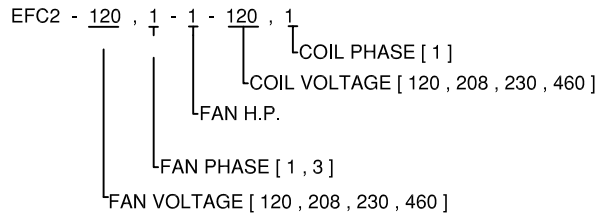
LwA: The overall (single value) fan sound power level in dB re. 10^{-12} Watts, 'A' weighted.

dBA: Estimated sound pressure level (re:0.0002 microbar) based on a single ducted installation at 5 ft., using a directivity factor of 1.

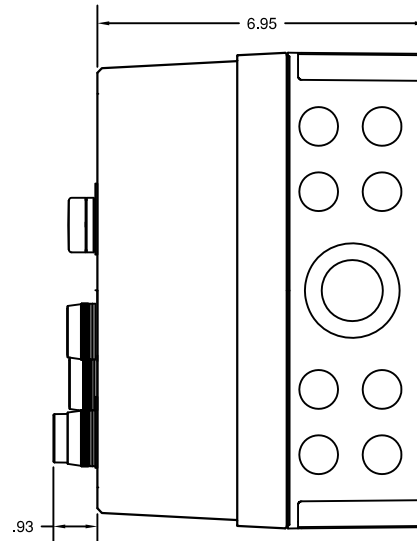
PROJECT:

LOCATION:	ENGINEER:	SALES ENGINEER:
ARCHITECT:	CONTRACTOR:	DATE:

MODEL DESIGNATION



FRONT VIEW



SIDE VIEW

SCHEDULE

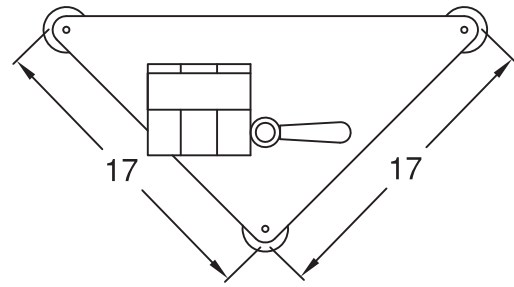
ITEM	QTY	MODEL	HP	FAN VOLTAGE	COIL VOLTAGE	REFERENCE

NOTES:

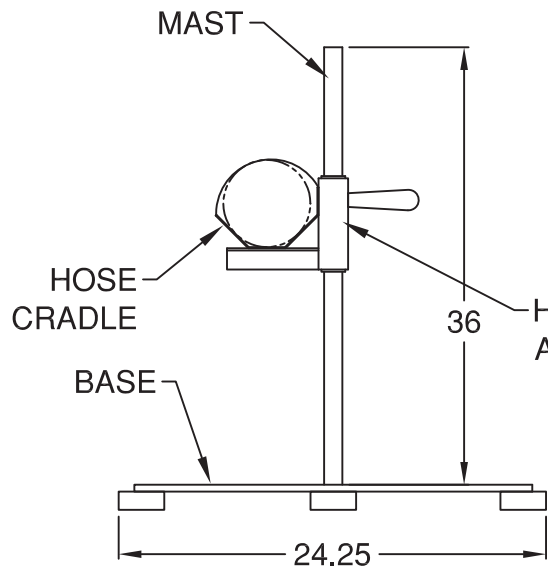
MOTOR PROTECTION FROM OVERLOAD. START/STOP 3-WIRE CONTROL, THROUGH THE COVER OVERLOAD RESET.
 UL NEMA 4X RATED, NON-CORROSIVE, OUTDOOR, WASH DOWN RATED.
 * DEFAULT VOLTAGES . ADVISE ACTUAL VOLTAGES IF DEFAULT(S) IS INCORRECT.
 ALL DIMENSIONS ARE IN INCHES.

PROJECT:

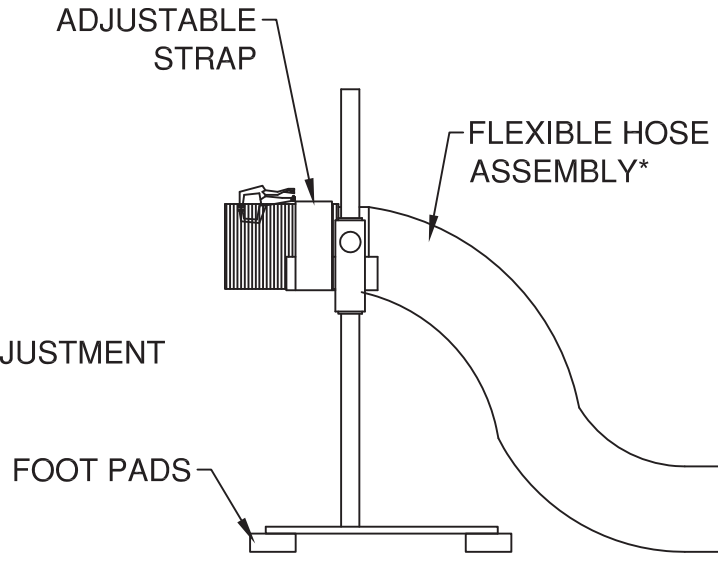
LOCATION:	ENGINEER:	SALES ENGINEER:
ARCHITECT:	CONTRACTOR:	DATE:



TOP VIEW



FRONT VIEW



SIDE VIEW

SCHEDULE

ITEM	QTY	MODEL	REFERENCE

NOTES:
 ALL DIMENSIONS IN INCHES
 BASE- 1/8" POWDER COATED STEEL
 HOSE CRADLE - 20 GAUGE FORMED POWDER COATED STEEL
 MAST- Ø 1" HEAVY GAUGE STEEL TUBING
 HEIGHT ADJUSTMENT ASSEMBLY - LOCKING HANDLE WITH OIL IMPREGNATED BRONZE BEARINGS
 ADJUSTABLE STRAP - 2" WIDE VELCRO WITH HOOK & LOOP
 FOOT PADS - Ø 2-1/2" x 1" THICK RUBBER
 *FLEXIBLE HOSE ASSEMBLY SHOWN NOT INCLUDED